



Plot 3, The Bridport Frenches Green, Upton, Poole, Dorset, BH16 5NE

Asking Price £345,000

- The Bridport
- A Collection of 2,3 & 4 Bedroom Homes
- En-Suite
- Close To Upton Country Park
- Thoughtfully Designed Layouts
- Two Bedrooms
- High Specification Interiors
- Beautifully Finished
- Reserve Off Plan!
- Anticipated Completion - July 2026

The Bridport Frenches Green, Poole BH16 5NE

A brand new, high specification and simply stunning Wyatt home situated within the highly anticipated 'Frenches Green' development in Upton, near Poole. Finished to a beautiful standard inside & out with garage and two parking space.



Council Tax Band:

Frenches Green

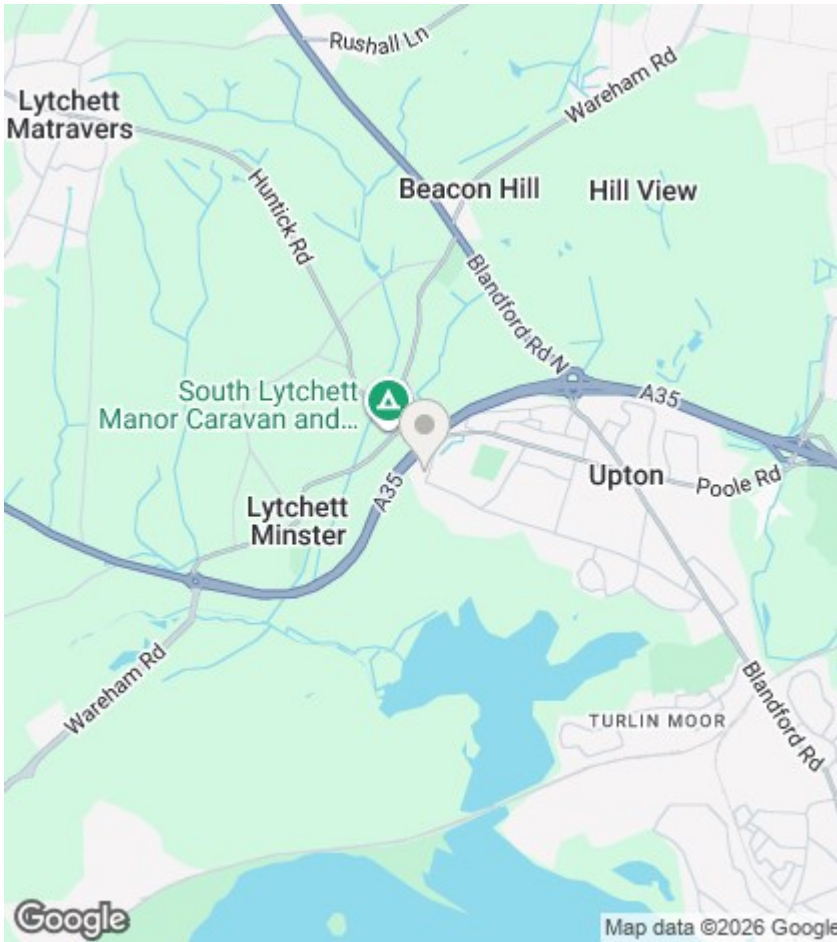
Step into luxurious, modern living at this exquisite home, featuring a high specification kitchen adorned with integrated appliances. The open plan living/dining room offers a spacious retreat. The Bridport also boasts two bedrooms, with en suite to the main bedroom. Welcome to a residence where sophistication meets comfort seamlessly.

Frenches Green offers a thoughtfully designed collection of 2, 3 & 4 bedroom homes alongside a selection of 2 bedroom apartments in the desirable setting of Upton. This impressive range of homes showcases Wyatt Homes' renowned craftsmanship, combining elegant architecture with spacious, contemporary interiors.

Nestled in the sought after community of Upton, Frenches Green offers a blend of refined suburban living and natural serenity. Just moments from Dorset's rolling countryside and the shores of Poole Harbour, this development sits in a well established area with leafy streets, mature green spaces and a strong sense of place. You'll find shops, cafés and local amenities close by, alongside beautiful outdoor retreats such as Upton Country Park, with its acres of woodland, formal gardens, shoreline and winding walking trails. Frenches Green offers the perfect balance of peace and vibrancy: a lifestyle of understated elegance where the sea, countryside and town all feel within easy reach.

Frenches Green is ideally placed for effortless travel. Major roads such as the A35 and A350 provide swift links to Poole, Bournemouth, and the wider South West region, making both work and leisure journeys easy. Public transport is also well served: Hamworthy railway station is nearby offering a direct link to London Waterloo in less than two and a half hours.

For more information, please contact our Upton Office. Secure your preferred plot early and customise your interiors when you reserve off plan.



Agents Note

Whilst every attempt has been made to ensure the accuracy of details and measurements contained in these particulars, they are not to be relied upon especially when potential cost could be incurred. No appliances have been tested so the agent cannot verify that they are in working order. The agent has not seen any legal documentation to verify the legal status of the property. This must be verified by your chosen solicitor.

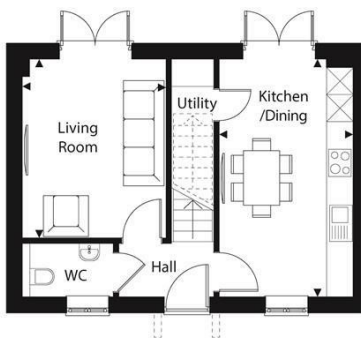
Viewings

Viewings by arrangement only. Call 01202 622101 to make an appointment.

EPC Rating:

Energy Efficiency Rating		Current	Potential
Very energy efficient - lower running costs			
(92 plus)	A		
(81-91)	B		
(69-80)	C		
(55-68)	D		
(39-54)	E		
(21-38)	F		
(1-20)	G		
Not energy efficient - higher running costs			
England & Wales		EU Directive 2002/91/EC	

The Bridport



Ground Floor

Dining / Kitchen	3.00m x 5.25m	9' 10" x 17' 3"
Living Room	3.16m x 3.93m	10' 4" x 12' 11"



First Floor

Main Bedroom (incl. Wardrobe)	4.20m x 3.32m	13'9" x 10' 10"
Bedroom 2	3.02m x 2.87m	9'11" x 9' 5"

TOTAL FLOOR AREA 77m² 830ft²